

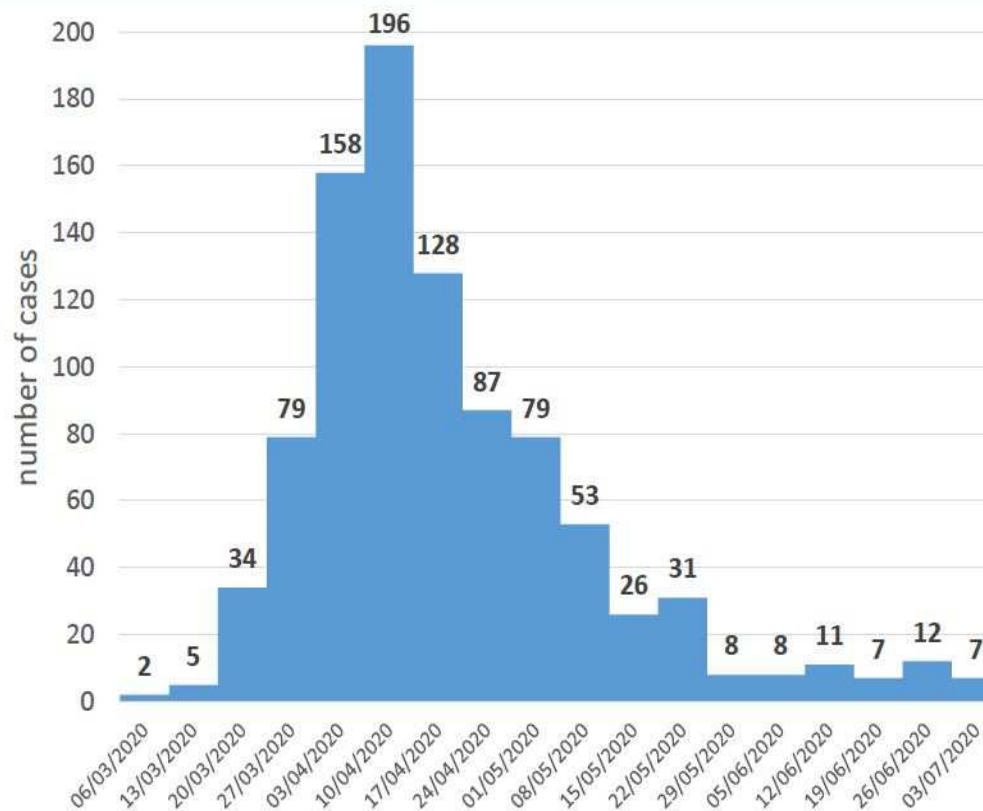
# Outbreak Management Plan

Mark Ansell

Overview & Scrutiny Board

21 July 2020

## Number of Havering residents testing positive for coronavirus each week from 6 March to 3 July 2020



Current data available here <https://www.havering.gov.uk/covid19havering>

# Taking stock

- Lockdown has controlled first wave of disease but has itself caused economic (and health) harm.
- Relaxation of social distancing underway and no sign, so far, that new cases are increasing
- But risk of further waves remains, causing more deaths and significant ongoing health problems
- NHS test and trace launched as additional control measure

# NHS test and trace

	Tier 1 – PHE – London Coronavirus Response Centre (LCRC)	Respond to complex cases or incidents – involving local agencies as needed
Details of +ve test → shared with NHS T&T	Tier 2 – clinical contact case workers	<ul style="list-style-type: none"> <li>• Contact case</li> <li>• Take history / record contacts</li> <li>• Forward contacts to tier 3 or escalate</li> </ul>
	Tier 3 – contact centre	Call handlers, working to a script call contacts and tell them to self isolate

## **Aim of outbreak control plan – minimise further harm to local residents**

### **Objectives**

- Prevent local outbreaks by
  - Maintaining public support and compliance with social distancing and NHS T&T
  - Ensuring the borough is COVID- SECURE
- Mobilise an effective response to bring local outbreaks under control when required.

# Comms and engagement

- A call to action – Keep Havering safe
- For individual residents
  - 2m wherever possible – 1m+ if necessary and which additional controls e.g. face coverings
  - Hand and respiratory hygiene
  - Comply with test, trace and isolate requirements
- Linked to information about local levels of disease
- Rotate messages to keep them fresh over the next 12 / 18 months
- Use tailored messages and outreach to communities that have been hit hardest by first wave
- And complement engagement with businesses etc re making Havering 'covid- secure'.

# Ensure Havering is COVID secure

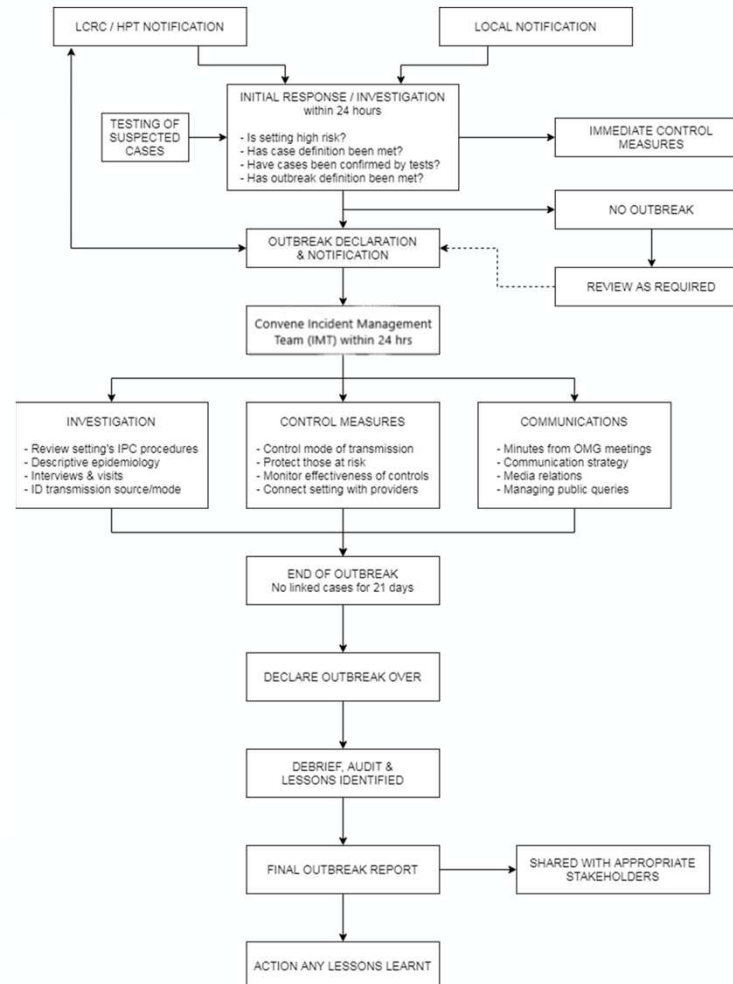
- Assist settings across the borough are compliant with relevant guidance
- Prioritise higher risk settings
- Provide support to encourage compliance but enforce if necessary
- Led by in Public Protection

## Role and responsibilities for the PHE London Coronavirus Response Cell (LCRC) and the Council in an outbreak

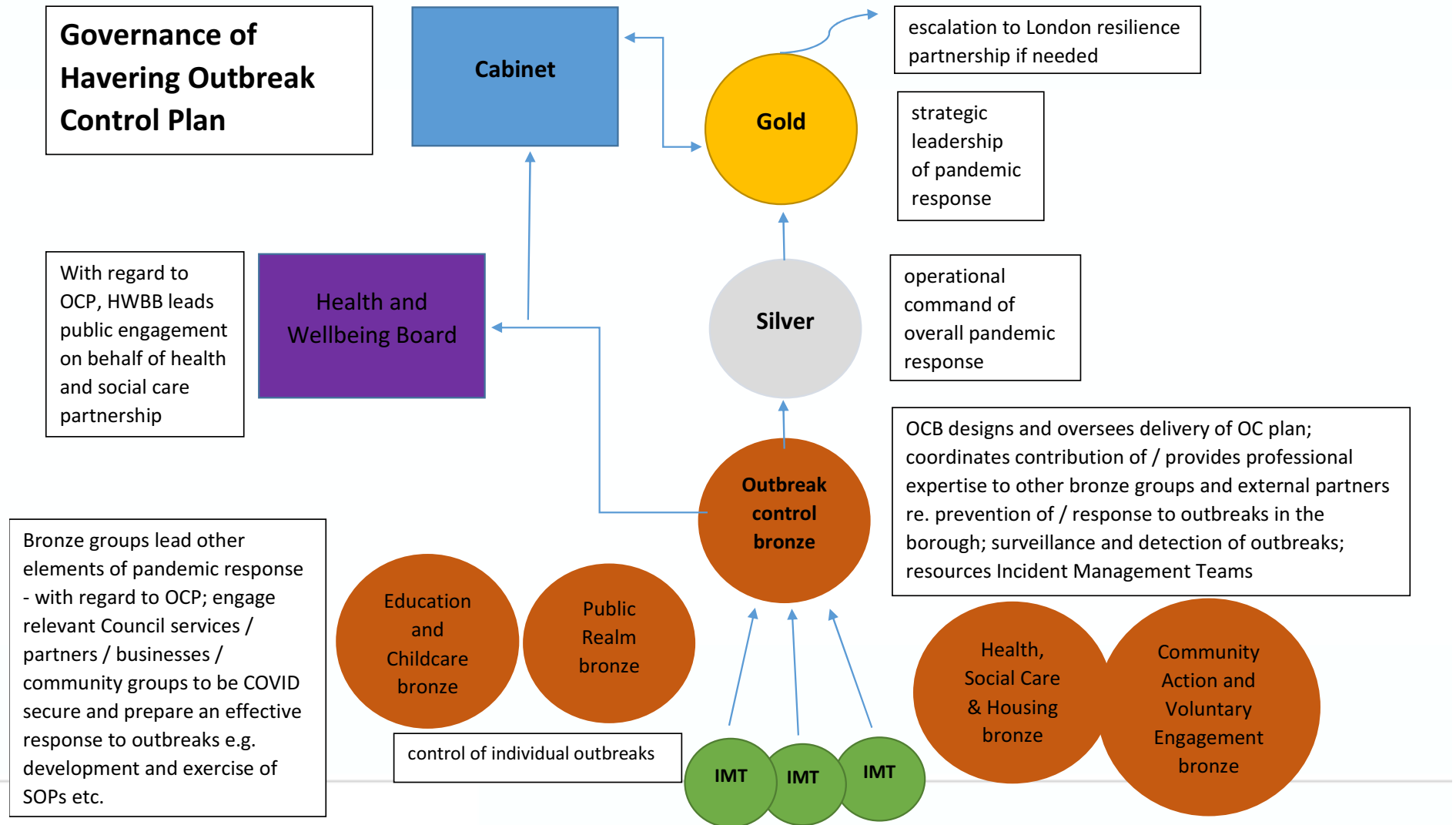
	Setting						
	Care Settings	School and Early Years	Workplace	Health Settings	Prison/ custodial institutions	Homeless and/or hostel	Community Cluster
<b>London Coronavirus Response Centre</b>	<ul style="list-style-type: none"> <li>- Receive notification from Tier 2</li> <li>- Gather information and undertake a risk assessment with the setting</li> <li>- Provide advice and manage cases and contacts, testing and infection control</li> <li>- Provide information materials to the setting</li> <li>- Recommend ongoing control measures</li> <li>- Convene IMT if required</li> <li>- Provide information to DsPH and advice/recommendations for ongoing support</li> <li>- Communicate and coordinate with other LAs, regions, developed administrations and internationally as required.</li> </ul>						<ul style="list-style-type: none"> <li>- Receive notification from Tier 2</li> <li>- Support Local Authority in their risk assessment of and response to an identified community cluster</li> </ul>
<b>Local authority response</b>	<ul style="list-style-type: none"> <li>- Prevention work and respond to enquiries</li> <li>- Support wider aspects of the response, such as support for any vulnerable contacts who are required to self-isolate, as per London's 6 Point Plan and national 7 themes of outbreak management plans</li> <li>- Follow-up and support the setting to continue to operate whilst managing the outbreak, including, if required, support with infection prevention and control measures and PPE access</li> <li>- Participate in IMT if convened by LCRC</li> <li>- Organise testing and Mobile Testing Unit deployment as required</li> <li>- Local communications e.g. briefings for Cllrs, local press inquiries, comms with the public</li> <li>- Liaise with CCG, GP's and other healthcare providers to provide ongoing healthcare support to setting</li> </ul>						<ul style="list-style-type: none"> <li>- Receive notification from Tier 2</li> <li>- Convene IMT</li> <li>- Provide support to community which may include translated materials, support to self-isolate, advice and enforcement</li> <li>- Liaise with the local CCG, GP's and other healthcare providers</li> <li>- Local communications (e.g. Cllr briefing, local press inquiries, comms with public)</li> </ul>



## Outbreak management process



# Governance



## Care homes

Rationale for inclusion in all outbreak plans	Residents highly vulnerable Setting of numerous outbreaks worldwide
Planning to date	IPC guidance; training, access to PPE; reactive advice from LCRC/LBH – captured in care home support plan
Next steps	Focus on use mass testing to minimise risk posed by asymptomatic carriage ; and doing more to prevent entry of COVID as supported by findings of Vivaldi study

## Schools

Rationale for inclusion in all outbreak plans	<p>Priority to minimise harm to CYP</p> <p>Schools link multiple families together</p> <p>Closure harms children and economy</p>
Planning to date	<p>DfE guidance</p> <p>Social distancing / physical redesign of classrooms to accommodate children of essential workers throughout.</p> <p>Extended e.g. bubbles - to enable return of Yrs R, 1 and 6</p> <p>Local SOP re. symptomatic CYP and teachers</p>
Next steps	<p>Implementation of further guidance for full return in September</p>